



Prospectus

Thank you!

REACH Homes would like to thank the following for the production of this brochure and the journey so far;

Blenheim Park Estates

UK Steel Enterprises

Big Lottery

UnLtd

Mark Perry at Action Coach

Heeley City Farm

South Yorkshire Energy Centre

Sheffield and Sheffield Hallam Universities

RIDO

City Taxis and Lupton Fawcett.

Sheffield Chamber of Commerce

Rotherham & Doncaster Chamber of Commerce

Photos; Adrian Richardson and REACH Homes.

Affordable

REACH Homes offer something new - the best possible accommodation for the least money. And not only are the houses and studios themselves inexpensive; we minimise the fuel bills too, so people can afford to live in them comfortably. You get to decide what you want to do with your money - high rental and purchase prices and ever-increasing fuel bills - or something new?

As a not-for-profit company we do all we can to reduce costs while maximising quality.

It's a fairer way of doing business.



Sustainable

Sunlight is free, so we use it to provide most of the power for our homes. Using low-energy building techniques and cutting-edge hardware means we can generate on site, saving pressure on the grid and giving owners energy security against increasing prices in the future.

We also use a high percentage of recycled and reclaimed materials in our builds, because we believe we can help to tackle the throwaway society. Millions of tons of building waste is landfilled every year, with those costs passed on to buyers and the rest of society through higher prices and damage to the environment. Re-using what we can cuts those costs and generates much-needed jobs.

From green roofing, greywater filtration and low-flow water systems to rainwater harvesting, permaculture and participatory community development, REACH uses features usually only available at a premium to show that sustainability is both practical and feasible in an affordable home.



Investable

Our production process ensures that our homes have reliability built in. The metal shells are already tough, designed to weather the harshest environments in the world and keep their cargo safe. We develop that and protect you by ensuring that our homes will last. We will provide solid mortgageability guarantee and a yearly maintenance deal for peace of mind.

Every step of the production process is assessed by an independent Technical Team to ensure that all processes and materials meet the highest standards. We work with architects, engineers and staff with the best available skills in low-energy building, and our mission is to ensure that REACH Homes are the best product on the market. Ongoing studies with industry and academic bodies will teach how to improve even further in what is still a rapidly emerging field worldwide.

While our homes will be a great investment they won't be sold to landlords or for investors to make money from. They are built as really affordable homes for you!



Making your home

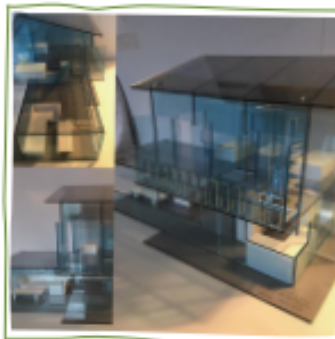
Our sites are amazing - former brownfield plots brought back to life with beautiful landscaping, sustainable drainage, edible planting, solar lighting to enhance collaboratively-planned public space, sculptures, water features - simply delightful!

We understand the importance of our surroundings on our wellbeing. The external finish of the homes will blend in to the landscape, reducing visual impact and working in harmony with nature.

Both the inside and outside of the homes have the potential to be customised, and there are a number of floorplans, from 320sq ft studios to 1200sq ft 3-bed houses. We work with the client, landowner and future tenants and owners from day one of the planning to ensure that everyone has a say in how their living spaces work. Our aim is to build strong, resilient mixed-tenure communities with links into other local networks, promoting ownership and involvement.

With a factory and staff trained up, we aim to produce up to 600 units per year by 2021. Each home should be ready to install on site within 3-4 weeks of order.

AS REACH Homes grow, we will offer other opportunities, including self-build and self-finish - it's really exciting!



Innovative

REACH is a new way of doing housing, both technically and socially. The processes we are using still have to have standards written for them in many cases, so we are leading the way internationally along with colleagues in the US, Australia and Europe.

Off-site manufacture is the future of building. Quick, clean and efficient with very low waste, high quality control and minimum disruption on site, many of the big housebuilders are already making the switch. REACH plans to train up a workforce with the skills to excel in this new era of construction, offering apprenticeship and training opportunities to local young people which could see them living in the very homes they have worked on.

Winning the Lupton Fawcett Innovation Award at Sheffield Business Awards 2017, was a vote of confidence in our novel approach based on our prototype. We plan to take this forward to create a new way of living in affordable homes. We have modes for tenants, owners, students, seniors, co-housing, rural communities and more.



REACH Homes GROUP

Our future, built better.

Contact us

reachme@reachhomes.org

REACH Homes CIC
226b South View Rd
Sheffield
S7 1DF

www.reachhomes.org

@reachhomes1

www.facebook.co.uk/reachhomes



REACH Homes CIC; Company Reg. No. 14091701